

6.♖c2+ ♘e3 7.♖c3+ ♘xe4
8.♖xf3+ ♘xf3 9.g7 h3 10.g8♖
h2 11.♖f7+ ♘e3 12.♗g3 ♖xg3
13.♖f1 ♗c5.

iv) 2...♖h6 3.♗g7 ♗b6 4.♖f8
♖h7 5.f6 ♖h3 6.♖b8, or here:
4...♖f4 5.♖xc8 ♖xf3 6.♗e6+
♘e4 7.♗g5+ ♘f4 8.♗xf3
♗xc8 9.f6 ♘xf3 10.f7.

v) 3.♖xh4 f4 4.♖h1 ♖b4
5.♖a1+ ♘c5 6.♖a4 ♘b6
7.♖xb4+ ♘xc7; 3.exf5?
♖xf5+.

vi) 4.♖g1? ♖b4 5.♖a1+ ♘c5
6.♖a4 ♘b6 7.♖xb4+ ♘xc7.

vii) 4...♗f6 5.♖g1 ♖a3 6.♖e1
♗xe4 7.♗e6+ ♖xe6 8.dxe6 ♗f6
9.b4.

viii) From now on every white
move threatens ♗e6+ or ♗f5+,
winning the black queen.

ix) 5...♗d7 6.♗e6 mate.

x) 6...♖xc7 7.♗e6+ ♖xe6
8.♖xc7 ♖h3 9.b4; 6...♖d7
7.♗e6+.

xi) 7...h3 8.♗e6+ ♖xe6 9.dxe6
♖xe6 10.♖e8 h2 11.♖h8, or
here: 10...♖c8 11.♖b5 h2
12.♖a5.

xii) 9.♖xc8? ♖xg7 10.♖xb7
♖g2; 9.♗e6+? ♖xe6 10.dxe6
♖h5 11.♖g2 ♖e8.

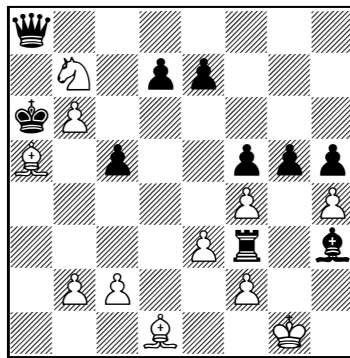
xiii) And now for the southern
hemisphere.

xiv) 19.♗e6+? ♖xe6 20.dxe6
♖e7 21.c8♖ ♗xc8 22.♖xc8
♖g7 23.b4 ♖g1 24.bxc5
♖xf2+ 25.♘b3 ♖e1 26.♖c7
♖b1+ 27.♘a3 h3 28.♖xd6+
♘c3 29.♖xe5+ ♘c2 30.♘a4
h2.

The study shows a perpetual,
pure ambush in all 8 directions
available on the chessboard.
Note also, that the wheel turns in
both directions, not a given as
the positions of the queens are
not the same in the opposite revo-
lutions (author).

♗d2! is crucial to control the
only flight square. This study
would easily win in a tourney
with the theme “perpetual
two-side-turning wheel”.

Commendation Albert van Tets South-Africa



Win

1.♖e2+/i c4/ii 2.♖xc4+/iii
♘xb7 3.♖d5+ ♘b8 4.♖xa8,
and:

a) 4...g4 5.b7!/iv g3/v 6.♖c7+
♘xc7 7.b8♖+ ♘xb8 8.♖xf3
wins/vi, or:

b) 4...♘xa8 5.hxg5/vii ♖g4
6.g6/viii ♖h3 7.g7/ix ♖f3
8.g8♖+ ♘b7 9.♖g2! ♖xg2
10.♘g2 ♖h4 11.f3 wins.

i) 1.♗xc5+? ♘xa5 2.b7 ♖g8
3.♖xf3 is favourable for Black,
e.g. 3...♖c4 4.b8♖/ix ♖f1+
5.♘h2 ♖xf2+ 6.♘h3 g4+
wins, and 4.hxg5 ♖f1+ 5.♘h2
only draws, 1.♖xf3? ♖g8
2.♗xc5+ ♘xa5 3.b7 is just as
unfavourable for Black.

ii) 1...♘b7 2.♖xf3+ ♘b8
3.♖xa8 ♘xa8 4.hxg5 ♖g4 5.g6
wins, e.g. 5...♖f3 6.c4 ♖e2
7.b3.

iii) 2.♖xf3? ♖g8 3.♗c5+
(f(h)xg5; d6) 3...♘xa5 4.b7
gxf4+ is also favourable for
Black, e.g. 5.♘h2 fxe3 6.fxe3 f4
7.exf4 ♖f5; 2.♗c5+ ♘xa5 3.b7

♖g8 4.hxg5 ♖g4 5.♗xd7 ♖h3
6.♖xg4 hxg4 draws.

iv) 5.♖xf3? gxf3 draws, e.g.
6.♘h2 ♖g4 7.♘g1 ♖h3 repeats;
5.♖d5? e6 6.♖c4 (♖xf3; gxf3)
g3 7.♖e1 gxf2+ 8.♖xf2 ♘b7
9.♖e2 ♖g4 draws.

v) After 5...d6 White has a
choice between many good
waiting moves.

vi) 8...♖g4 9.♘g2 gxf2
10.♘xf2 e6 11.e4 ♘c7 12.c3 d6
13.exf5 exf5 14.♖xg4, or
9...♖xf3+ 10.♘xf3 gxf2
11.♘xf2.

vii) 5.fxg5? f4 wins for Black.

viii) 6.♘g2? h4 7.g6 h3+ wins
for Black.

ix) 7.♘g2? ♖h4 8.♘g3 (g7;
♖h3+) 8...♖h3+ 9.♘g2 ♖h4
draws by repetition.

Many mate pictures, nice
tempo work and various of-
fers all over the board. And
then, suddenly, in the thick of
the fight, this paradoxical lit-
tle move 5.b7! involving a pa-
tient auto-obstruction of
w♖a8 so that it can decisively
capture the b♖f3 when
Black’s defences are embar-
rassed.