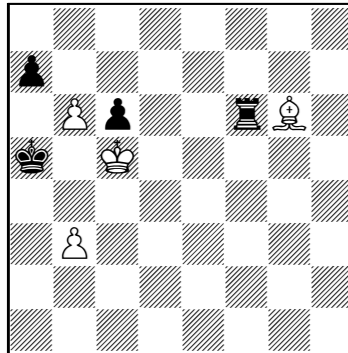


5...♔h5 6.♖e5+ ♔h6 7.♗h4+ ♔g7 8.♖g5 ♖b6+ 9.♔c3 ♖c6+ 10.♔d4 ♖d6+ 11.♔e3 ♖e6+ 12.♔f3! ♖f6+ 13.♔g4!, or 2...♔g7 3.♗c7+ wins, e.g. 3...♔f8 4.♗e7+ ♔g8 5.♗e8+ ♔g7 6.♖e7+ ♔f6 7.♖f7+! ♔g5 8.♗e5+ ♔g4 9.♗e4+ wins, or here 7...♔g6 8.♗g8+ ♔h5 9.♖f5+! ♔h4 10.♗c4+ ♔g3 11.♗d3+ ♔h4 12.♗e4+ wins, or 3...♔g6 4.♖g3+ ♔f6 5.♖f3+ ♔e6 6.♗f7+ ♔e5 7.♖f5+ ♔d4 8.♗d5+, or here: 4...♔f5 5.♗c5+! ♔f4 6.♗e3+ ♔f5 7.♖f3+ ♔g6 8.♗e4+ ♔g7 9.♗e7+ ♔g8 10.♗e8+ wins. v) 4.♗c3+? ♖f6! 5.♖e8+ (♖f7; ♗h2+) 5...♔h7! 6.♗c7+ ♗g7! 7.♖e7? ♖f7+. vi) 9.♗d8+ ♖g8 10.♗d4+ loss of time. vii) Now 9...♖f6 is not possible: 10.♖f7! ♗h2+ 11.♔c3! ♗g3+ 12.♔c4!, or 11...♗h3+ 12.♔b4! wins. viii) 12...♗g5 13.♖e7+ (also 13.♗b7+) 13...♔h8 14.♗a8+ ♖g8 15.♗h1+ wins, or 12...♗h5 13.♖e7+ (also 13.♖b8) 13...♔h6 14.♗f4+ ♖g5 15.♗f8+! wins. ix) 16...♖g4 17.♗f5(7)+ wins.

**The study looks drawish until 11...♖g6 because White's checks are exhausted. And then like a quiet bolt from the blue 12.♔b1! An incredibly deadly quiet move.**

### 3rd Honourable Mention Ignace Vandecasteele & Roger Missiaen Belgium



Win

1.b7!/i ♖f8/ii 2.♔h5!/iii ♖b8/iv 3.♔xc6/v ♖h8/vi 4.♔f7!/vii ♔b4 5.♔c7!/viii a5!/ix 6.♔e6!/x ♔c3 7.♔c8 ♖h7+ 8.♔d7 ♖h8 9.♔a4!/xi wins.

i) First quiet move. 1.bxa7? ♖f8 2.♔d3 ♖a8 3.b4+ ♔a4 4.♔c2+ ♔a3 5.♔b6 ♔xb4 draws.

ii) 1...♖xg6 2.b8♗.

iii) Second quiet move. 2.♔xc6? ♔b4 3.♔c2 ♔c3 4.♔d1 ♔d2 5.♔g4 ♔c3 6.♔c8 ♖f6+ 7.♔c7 ♖b6 draws.

iv) 2...♖f5+ 3.♔xc6 ♖b5 4.♔d1; 2...a6 3.♔xc6 ♔b4 4.♔g4 a5 5.♔c8 ♖f6+ 6.♔c7, see main line; 2...♔a6 3.♔xc6 ♖h8 4.♔f7!/xii ♔a5 5.♔c7; 2...♖h8 3.♔g4! ♖b8 4.♔xc6 ♔b4 5.♔d1 ♖e8 6.♔c7 ♖e7+ 7.♔b8 a5 8.♔a8, or here 3...a6 4.♔xc6 ♔b4 5.♔c8 ♖h6+ 6.♔c7.

v) 3.b4+? ♔a4 4.♔f3 ♔b3 5.♔xc6 a6 draws.

vi) 3...♔b4 4.♔d1 ♖g8 5.♔c7 ♖g7+ 6.♔b8 wins.

vii) Third quiet move. 4.♔g4? ♔b4 5.♔d1 ♔c3 6.♔c7 ♔d2 7.b8♗ ♖xb8 8.♔xb8 a5 9.♔c7 ♔xd1 10.♔b6 ♔c2 draws.

viii) Fourth quiet move.

ix) 5...♖f8 6.♔e6(d5).

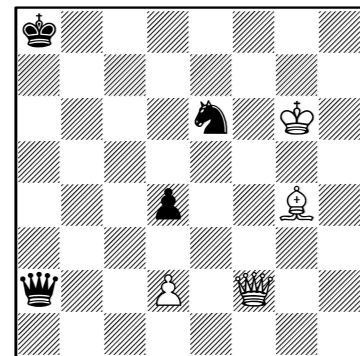
x) Sixth quiet move.

xi) Seventh quiet move. And White wins now that the black pawn on a5 is blocked.

xii) But not: 4.♔g6? ♔a5 5.♔c7 ♔b4.

**A beautiful puzzle because the draw margin is close. The key-move 2.♔h5! serves both the attack of the advanced pawns as well as the defence of the backward pawn.**

### 2nd Honourable Mention Yuri Bazlov Russia



Win

1.♗f7! ♗c2+/i 2.♔f5!/ii ♔f4+ 3.♔g5! ♗xd2 4.♔e4+ ♔d5+ 5.♔g6! ♗b4!/iii 6.♗xd5+!/iv ♔a7 7.♔h5! d3/v 8.♗a8+ ♔b6 9.♗c6+ ♔a5 10.♔xd3! ♗b6! 11.♗c4! ♗b3 12.♗c5+!/vi ♔a4 13.♔c2 wins.

i) 1...♗xd2 2.♔f3+ ♔b8 3.♗b7 mate, or 1...♔b8 2.♗xe6 ♗xd2 3.♗b6+ wins.

ii) 2.♔f6? ♔c7! draws.

iii) 5...♔b8 6.♗xd5 ♔c7 7.♗c6+ ♔d8 8.♔f5!

iv) 6.♔xd5+? ♔b8 7.♗e8+ ♔a7/vii 8.♗d7+ ♔b6 9.♗c6+ ♔a5 10.♔c4 ♗b6 draws.

v) 7...♔b8 8.♗d8+! ♔a7 9.♗c7+ ♔a6 10.♔d3+, 7...♗e7